



Planning
Committee Meeting

7 September 2021



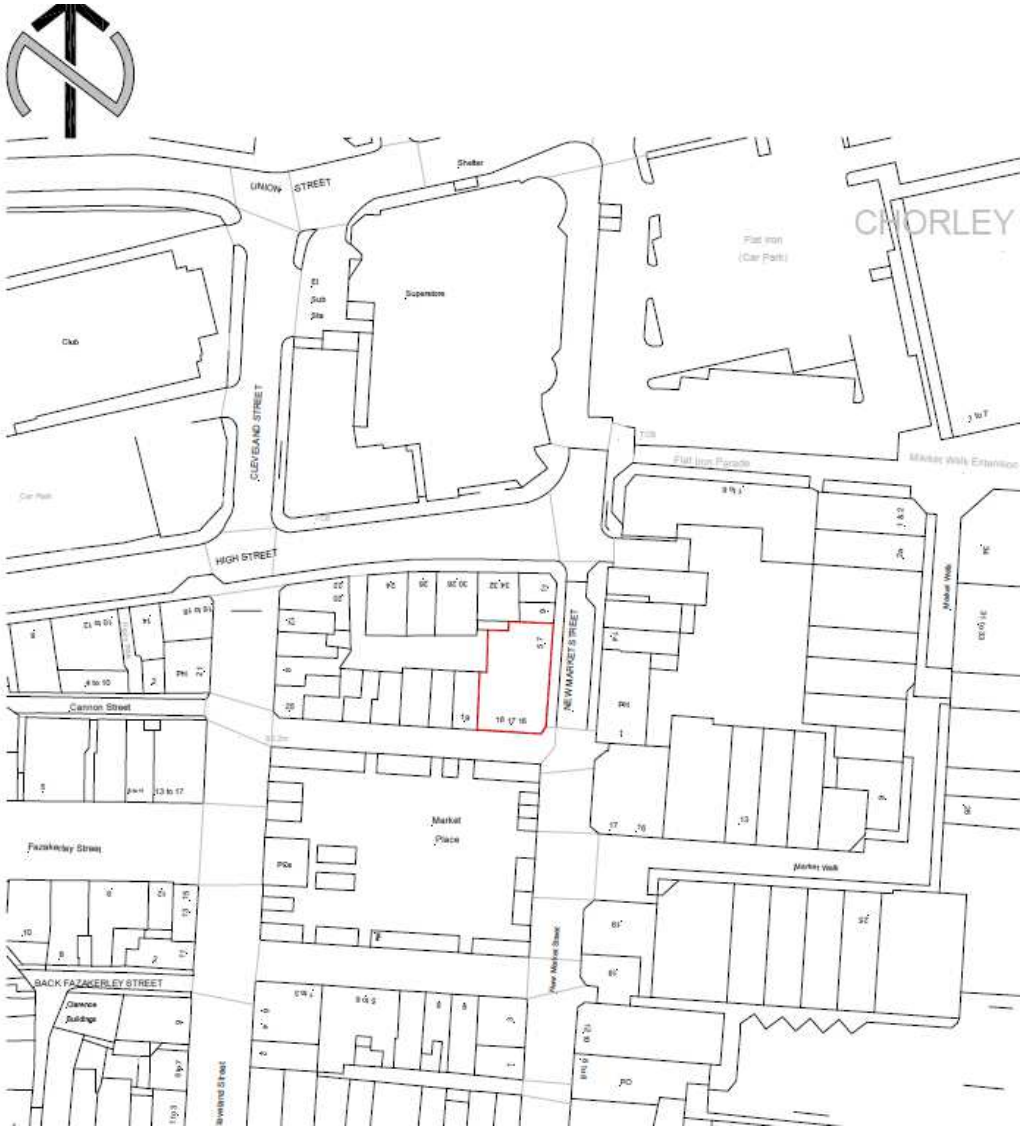
Item

21/00675/FUL

5-7 New Market Street, Chorley

Change of use of the upper floors from ancillary retail storage space (Use Class E) to eight residential apartments (Use Class C3), and external alterations to the rear elevation

Location Plan



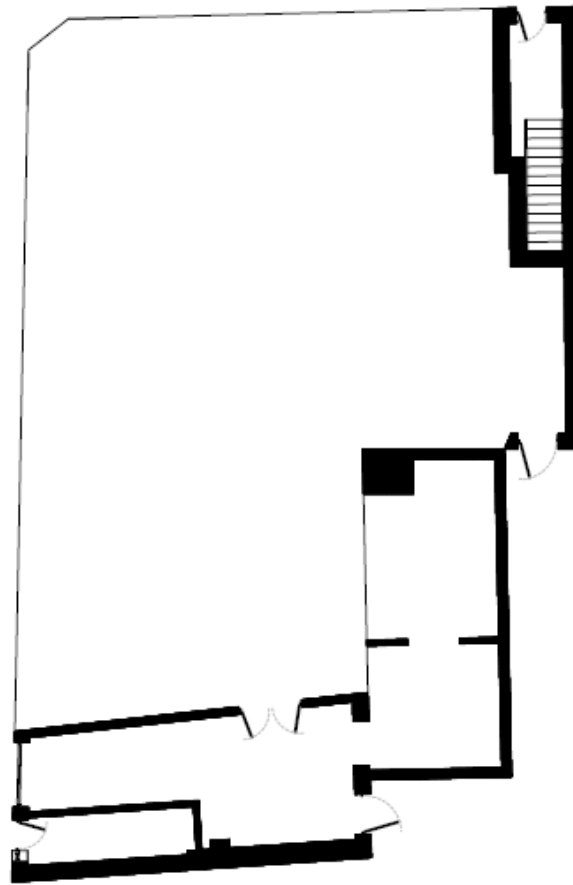
Satellite Image 2020



Existing Site Plan

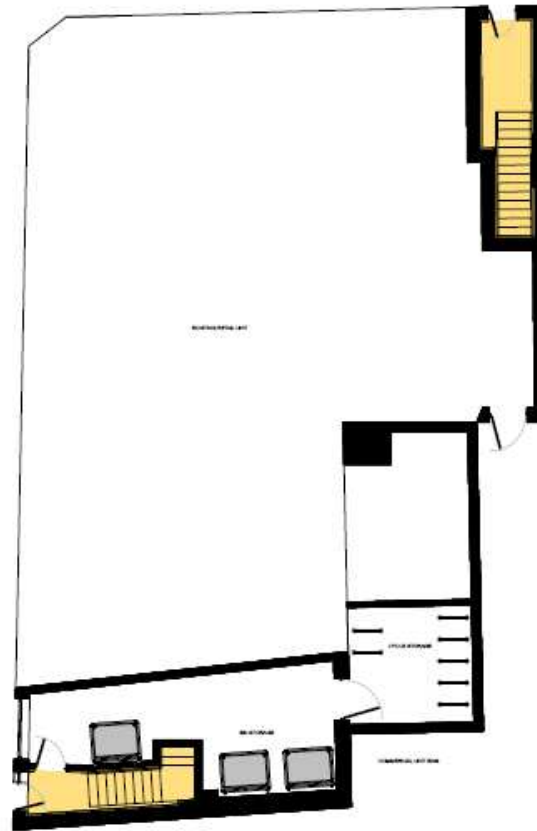


Existing Ground Floor Plan



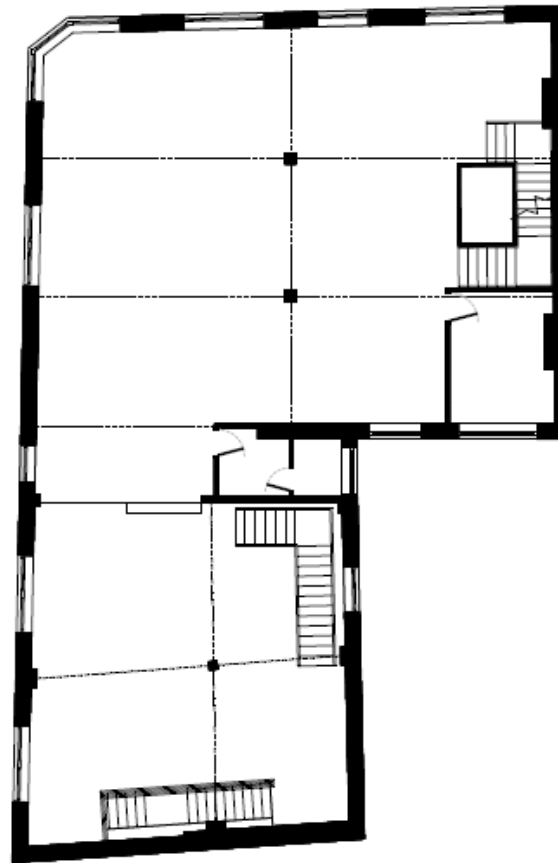
GROUND

Proposed Ground Floor Plan



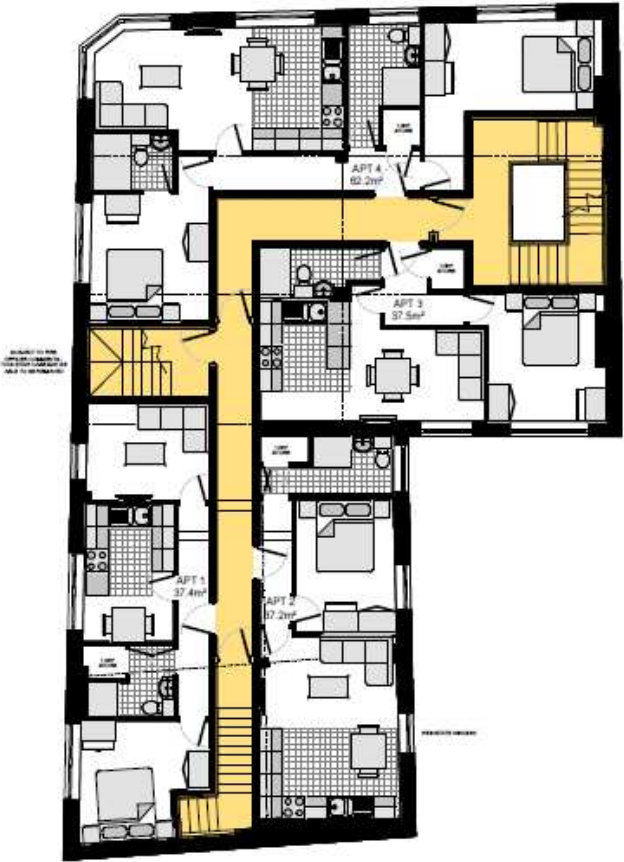
GROUND

Existing First Floor Plan



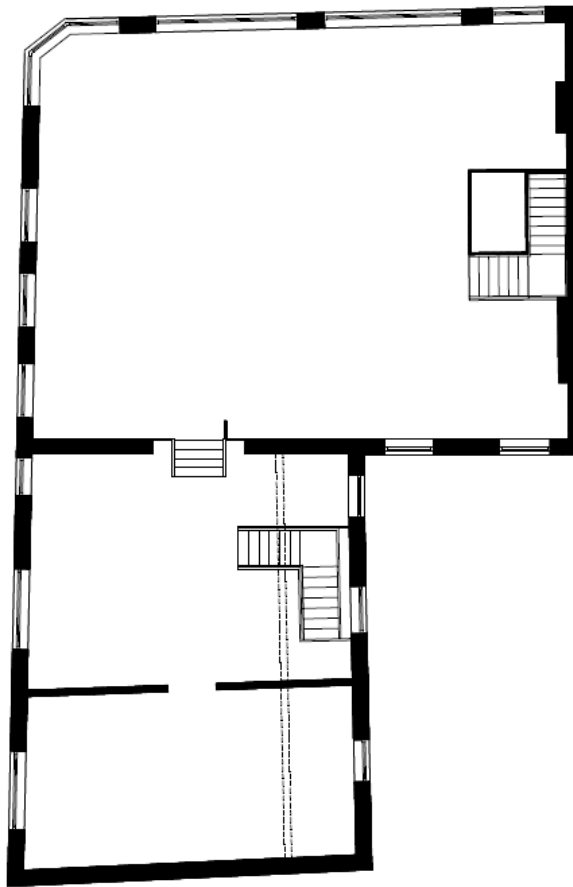
FIRST

Proposed First Floor Plan



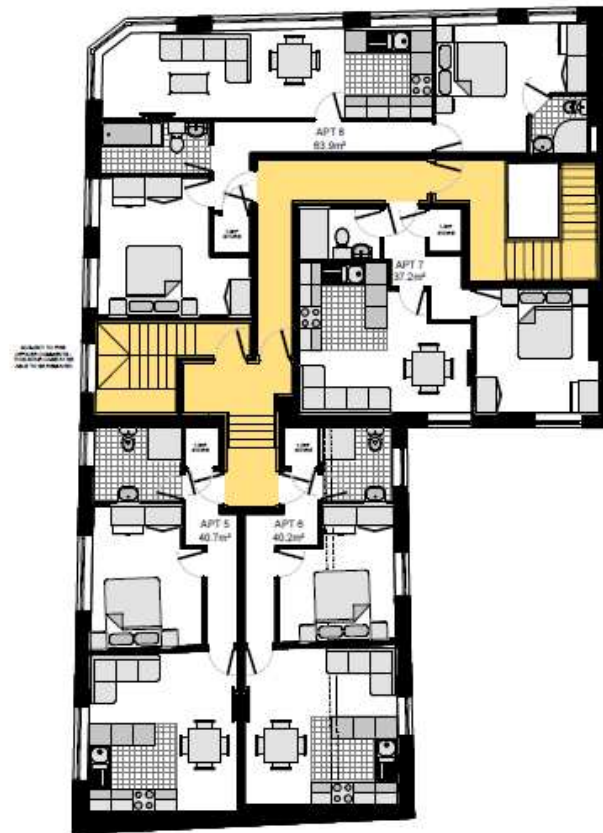
FIRST

Existing Second Floor Plan



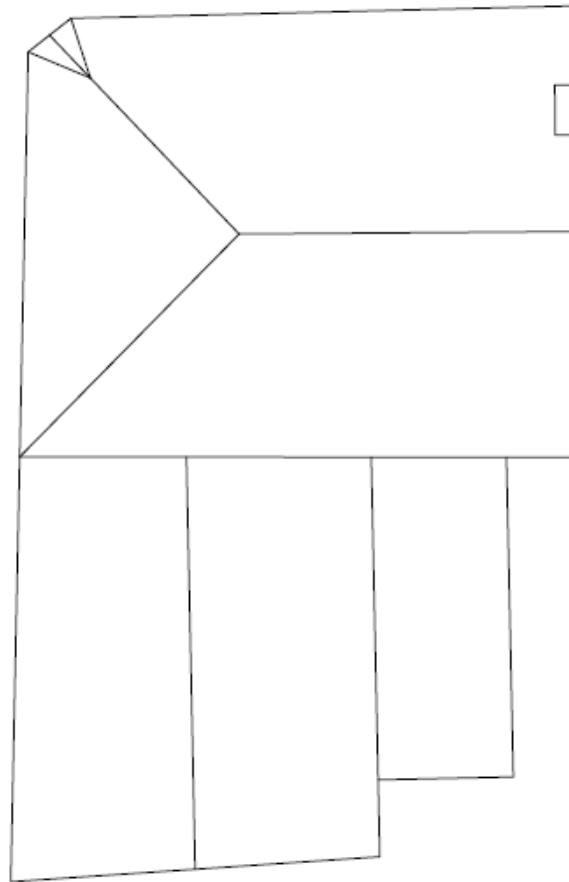
SECOND

Proposed Second Floor Plan



SECOND

Proposed Roof Plan

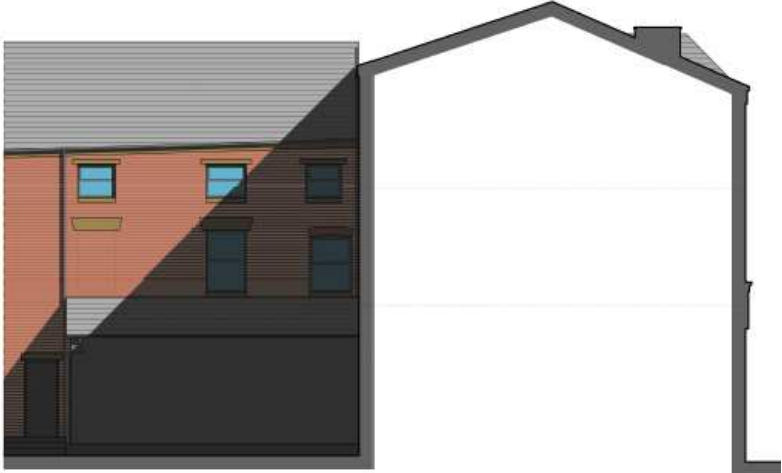


ROOF

Existing Elevations



FRONT



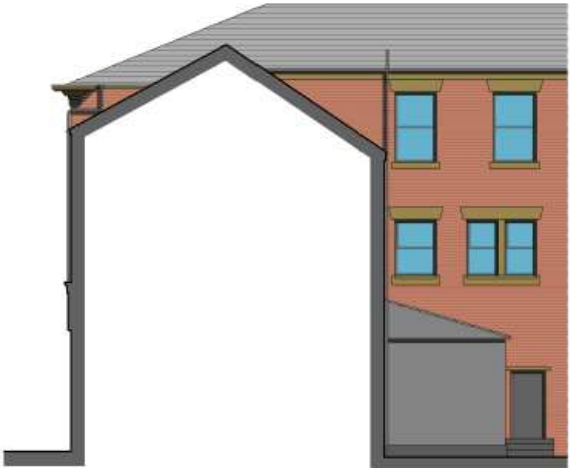
REAR



SIDE

- MATERIALS KEYLIST
- BRICKWORK
 - GREY CLADDING
 - WHITE CLADDING
 - STONE DRESSING TO OPENING REVEALS AND QUOIRS
 - STONE FACING WALLS
 - CORNER STONE DRESSING
 - METAL FLASHINGS
 - ROOF TILES
 - WINDOWS AND DOORS

- YLIST
- BRICKWORK
 - GREY CLADDING
 - WHITE CLADDING
 - STONE DRESSING TO OPENING REVEALS AND QUOIRS
 - STONE FACING WALLS
 - CORNER STONE DRESSING
 - METAL FLASHINGS
 - ROOF TILES
 - WINDOWS AND DOORS

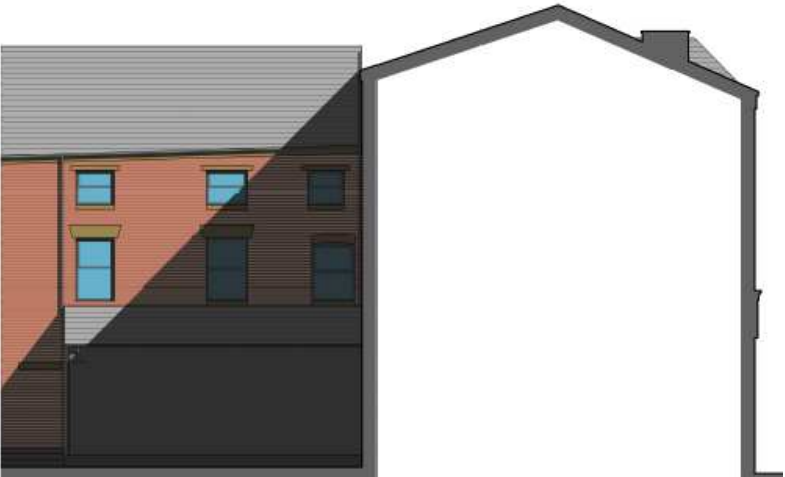


REAR

Proposed Elevations



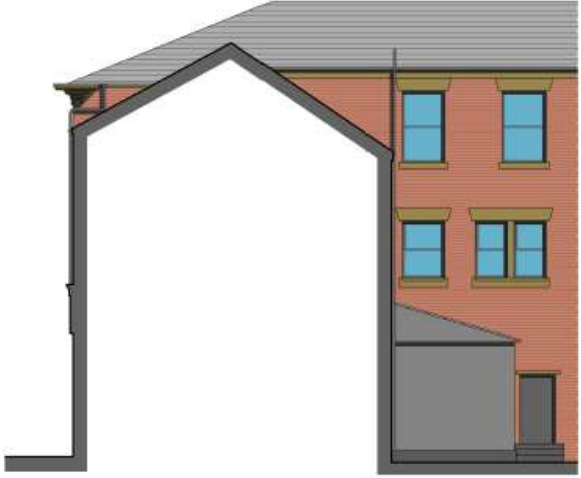
FRONT



REAR



SIDE



REAR

- MATERIALS KEYLIST
- BRICKWORK
 - GREY CLADDING
 - WHITE CLADDING
 - STONE DRESSING TO OPENING REVEALS AND GLAZING
 - STONE FACING WALLS
 - CORNICE STONE DRESSING
 - METAL FLASHINGS
 - ROOF TILES
 - WINDOWS AND DOORS

- KEYLIST
- BRICKWORK
 - GREY CLADDING
 - WHITE CLADDING
 - STONE DRESSING TO OPENING REVEALS AND GLAZING
 - STONE FACING WALLS
 - CORNICE STONE DRESSING
 - METAL FLASHINGS
 - ROOF TILES
 - WINDOWS AND DOORS

Site photo – July 2021



Site photo – July 2021



Site photo – July 2021

