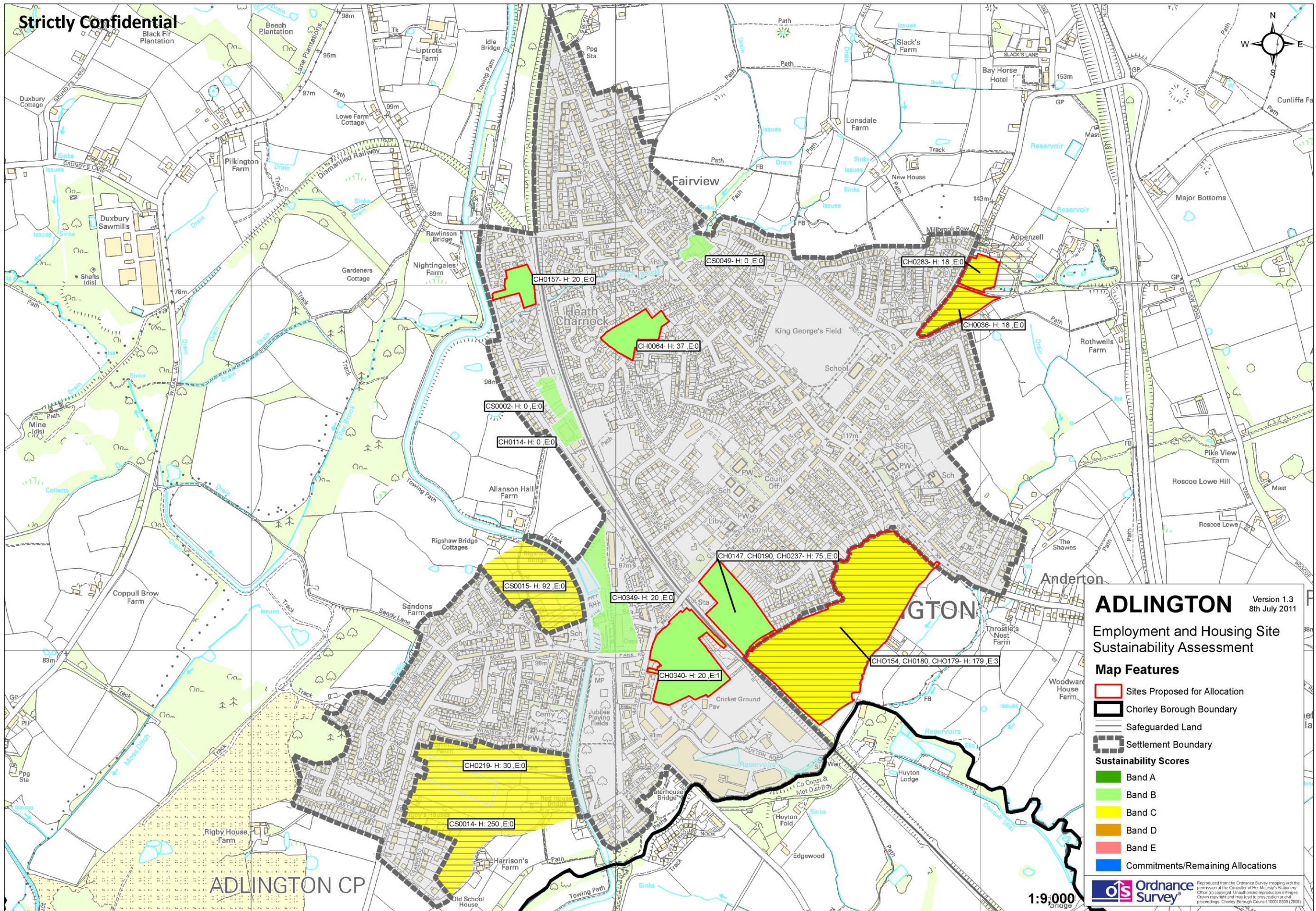


Strictly Confidential



**ADLINGTON** Version 1.3  
8th July 2011

Employment and Housing Site  
Sustainability Assessment

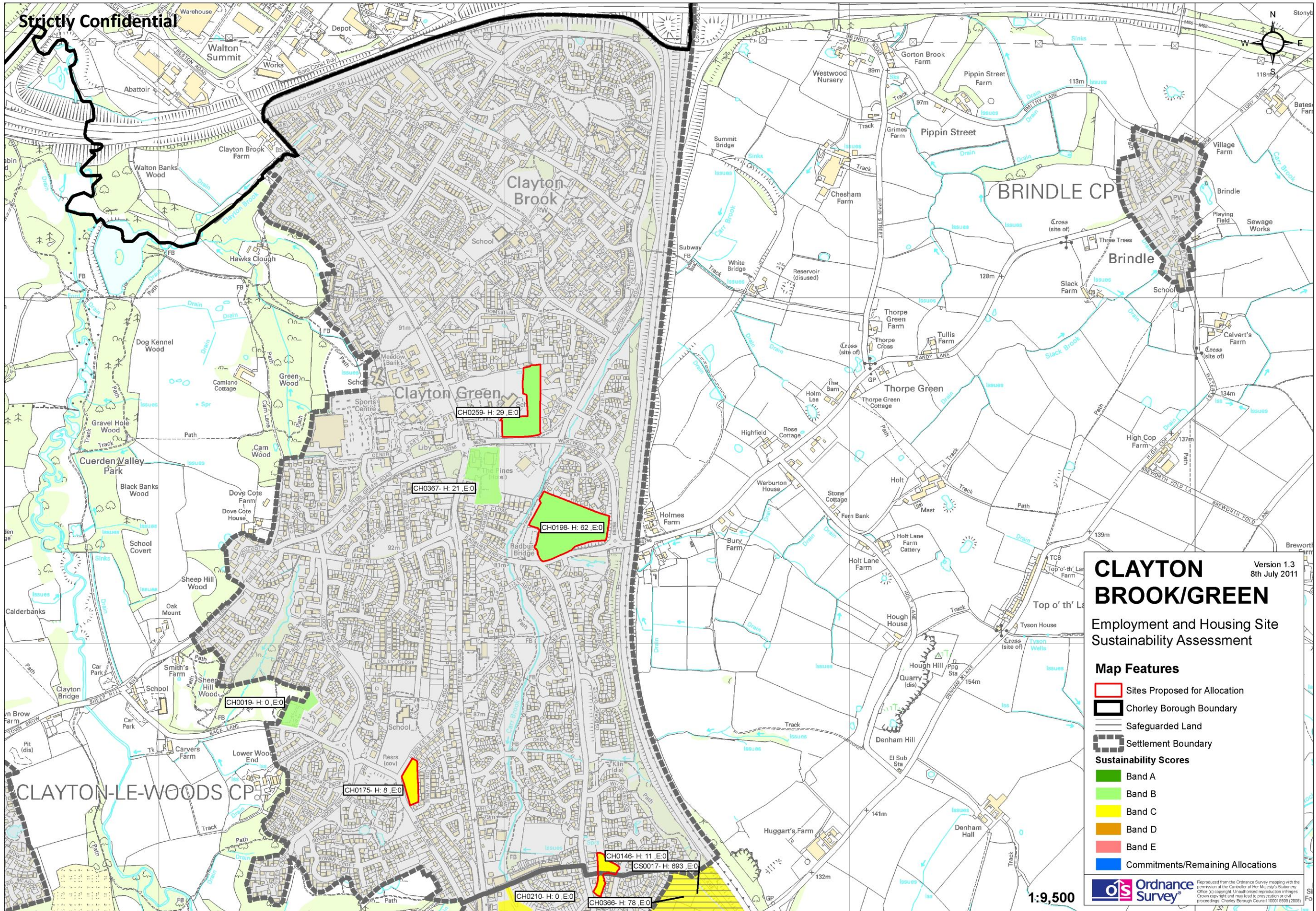
**Map Features**

- Sites Proposed for Allocation
  - Chorley Borough Boundary
  - Safeguarded Land
  - Settlement Boundary
- Sustainability Scores**
- Band A
  - Band B
  - Band C
  - Band D
  - Band E
  - Commitments/Remaining Allocations

Ordnance Survey  
Reproduced from the Ordnance Survey mapping with the permission of the Controller of Her Majesty's Stationery Office (C) copyright. Unauthorised reproduction infringes Crown copyright and may lead to prosecution or civil proceedings. Chorley Borough Council 100816938 (2008)



Strictly Confidential



Version 1.3  
8th July 2011

# CLAYTON BROOK/GREEN

Employment and Housing Site  
Sustainability Assessment

### Map Features

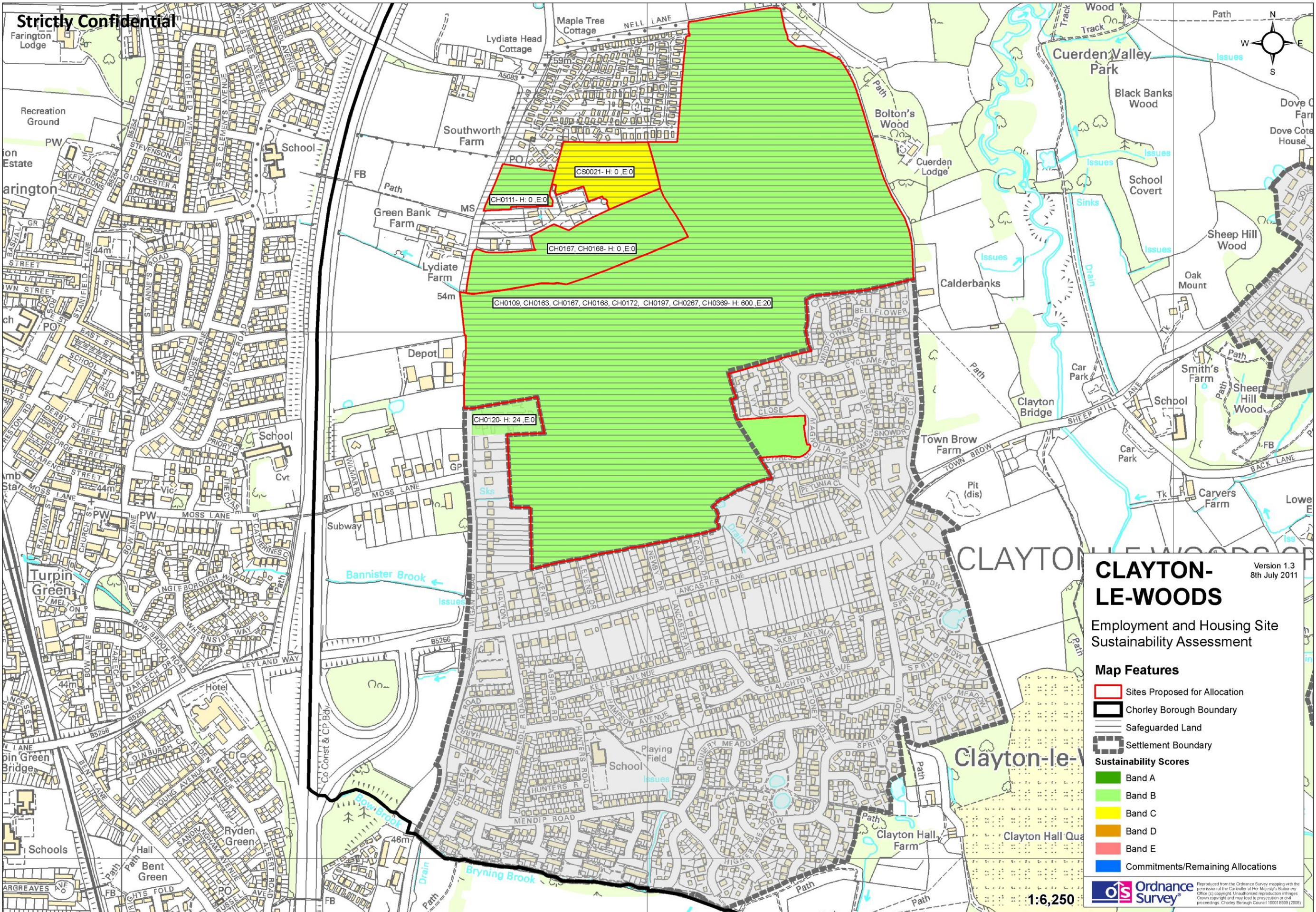
- Sites Proposed for Allocation
- Chorley Borough Boundary
- Safeguarded Land
- Settlement Boundary
- Sustainability Scores**
- Band A
- Band B
- Band C
- Band D
- Band E
- Commitments/Remaining Allocations

Ordnance Survey  
Reproduced from the Ordnance Survey mapping with the permission of the Controller of Her Majesty's Stationery Office (C) copyright. Unauthorised reproduction infringes Crown copyright and may lead to prosecution or civil proceedings. Chorley Borough Council 100016909 (22008)

1:9,500



Strictly Confidential



Version 1.3  
8th July 2011

# CLAYTON-LE-WOODS

## Employment and Housing Site Sustainability Assessment

### Map Features

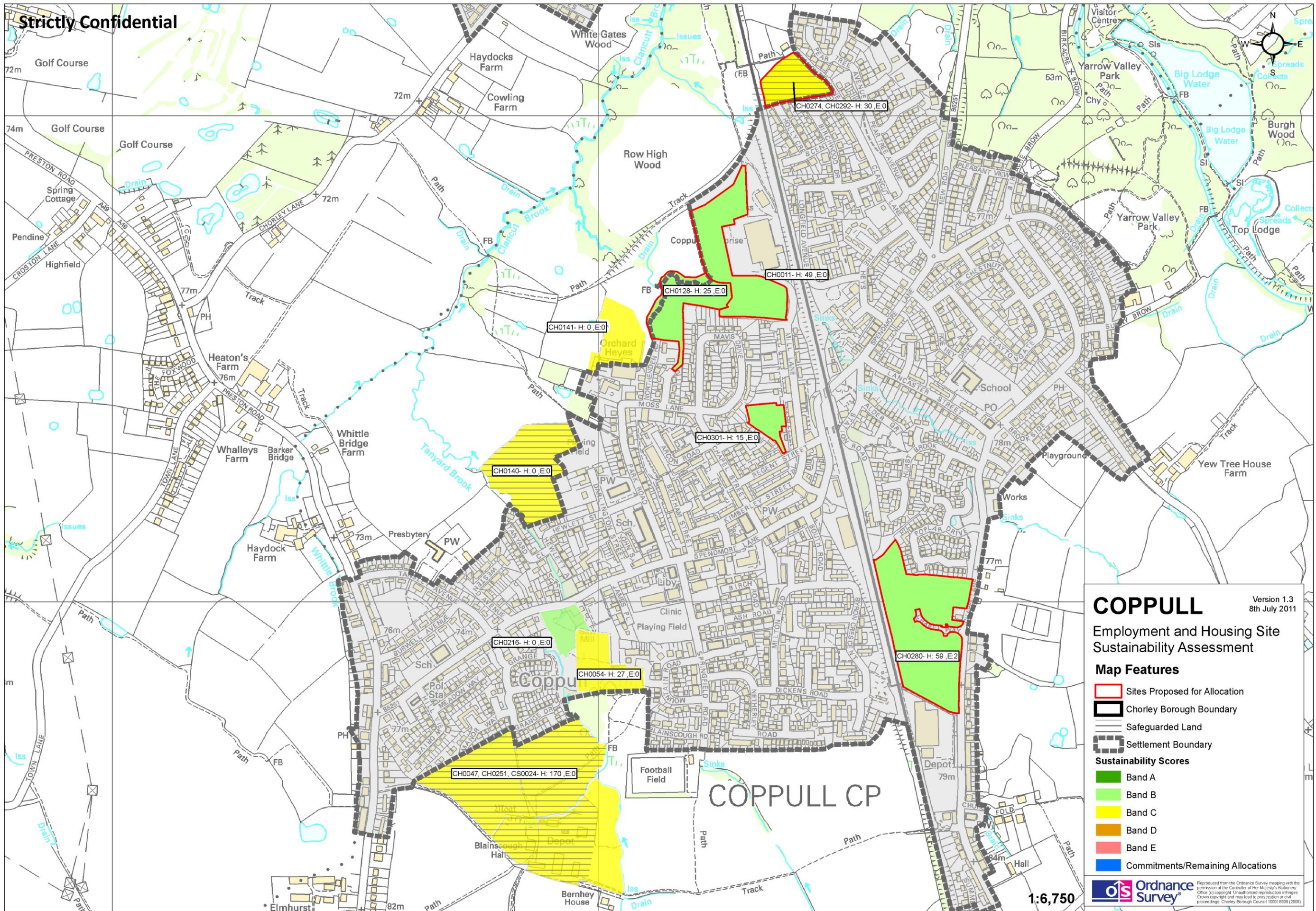
- Sites Proposed for Allocation
  - Chorley Borough Boundary
  - Safeguarded Land
  - Settlement Boundary
- Sustainability Scores**
- Band A
  - Band B
  - Band C
  - Band D
  - Band E
  - Commitments/Remaining Allocations

**Ordnance Survey**  
Reproduced from the Ordnance Survey mapping with the permission of the Controller of Her Majesty's Stationery Office (C) copyright. Unauthorised reproduction infringes Crown copyright and may lead to prosecution or civil proceedings. Chorley Borough Council 100016939 (2008)

1:6,250



Strictly Confidential



### COPPULL

Version 1.3  
8th July 2011

Employment and Housing Site Sustainability Assessment

#### Map Features

- Sites Proposed for Allocation
- Chorley Borough Boundary
- Safeguarded Land
- Settlement Boundary

#### Sustainability Scores

- Band A
- Band B
- Band C
- Band D
- Band E
- Commitments/Remaining Allocations

Ordnance Survey  
Reproduced from the Ordnance Survey mapping with the permission of the Controller of Her Majesty's Stationery Office (C) copyright. Unauthorised reproduction infringes Crown copyright and may lead to prosecution or civil proceedings. Chorley Borough Council 100816938 (2008)

1:6,750