

Street Safe

The
Children's
Society

Lancashire

Our Founder.....



- Edward Rudolph was a Sunday School Teacher and founded the Children's Society in 1881 after seeing 2 of his pupils begging on the street
- 1881-1970-Focus was on homes for up to 10 children
- 1970-1999- Moved away from children's homes and towards helping young people to solve problems
- 1990-2002-Move towards advocacy for young people and changes in legislation

Our Beliefs.....

Brave: We are brave, fighting injustice at every level, fearless in our determination to be listened to. We expose and directly address 'hard truths' and are determined to turn words swiftly into actions.

Ambitious: We are ambitious for the lives of the children we work with. The pioneering work we do helps them and children across the country aspire to better lives.

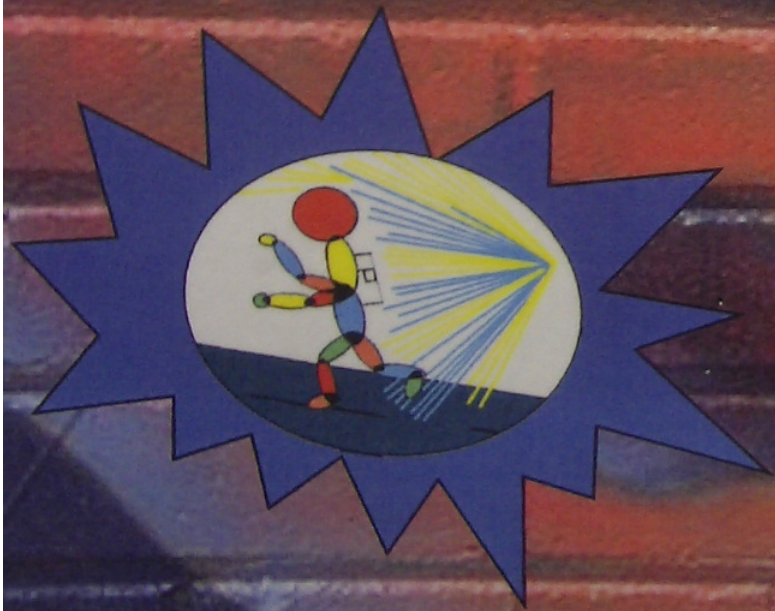


Supportive: We support children in their personal development and to build positive relationships. Together we enable children to reach their full potential and realise their ambitions.

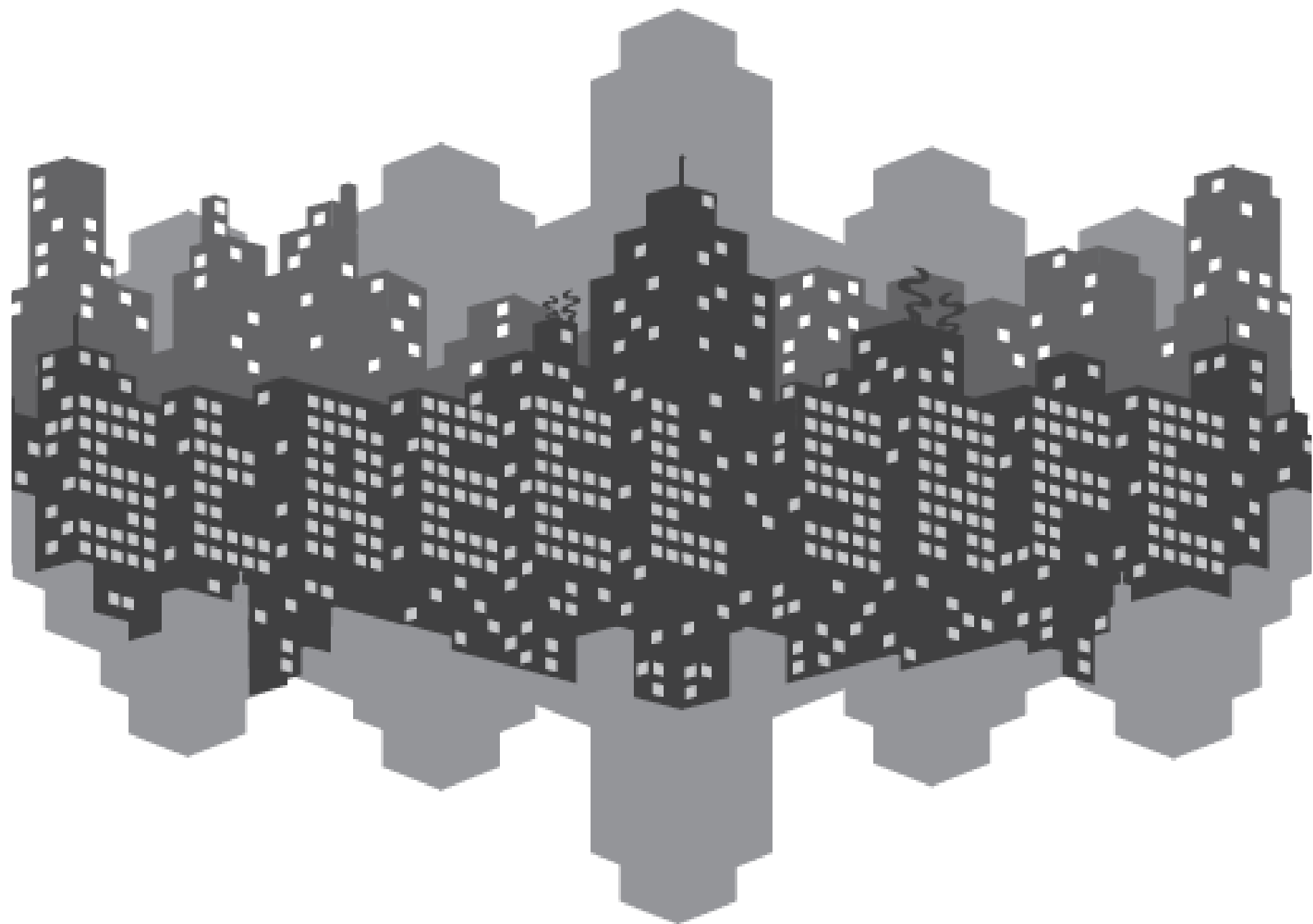
Trusted: We have been trusted for over a century to deliver care where it is most needed. We maintain that trust by being dependable and consistent in our approach and by fighting for change based on hard evidence



**Lancashire Young
Runaway's Project**



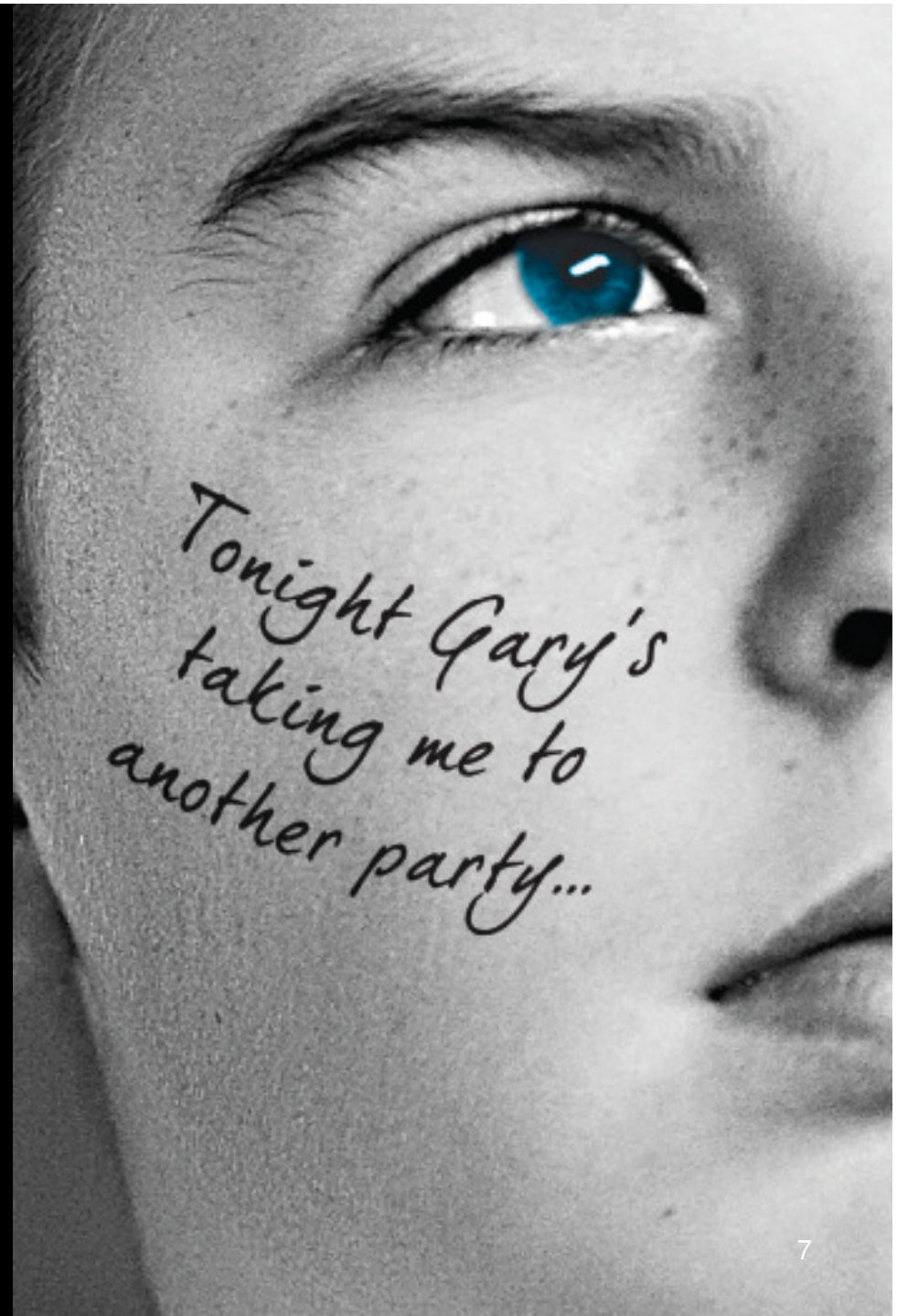
**Missing From
Home Scheme.**



Street Safe Lancashire

*We work to support
young people at risk of
or involved in child
sexual exploitation and
who go missing from
home*

The Children's Society




Street Safe Lancashire

What we do....

- 1-2-1 Direct Work
- Group Work
- Awareness Raising and Training
- Participation
- Consultancy

The Children's Society



He likes me to
smell nice
mum doesn't know
it's our secret

Street Safe Lancashire

How we work....

- Listening to the child or young person
- Giving the child or young person a voice
- Being a supportive and helping hand

The Children's Society



Specialist CSE Multi-Agency Teams

- **Awaken:**

Blackpool and Fylde, Lancaster,
Morecambe and Wyre

- **Deter :**

Preston, Chorley, South Ribble and
West Lancs

- **Engage:**

Blackburn with Darwen,
Hyndburn, Ribble Valley, Pendle
and Rossendale

The Children's Society

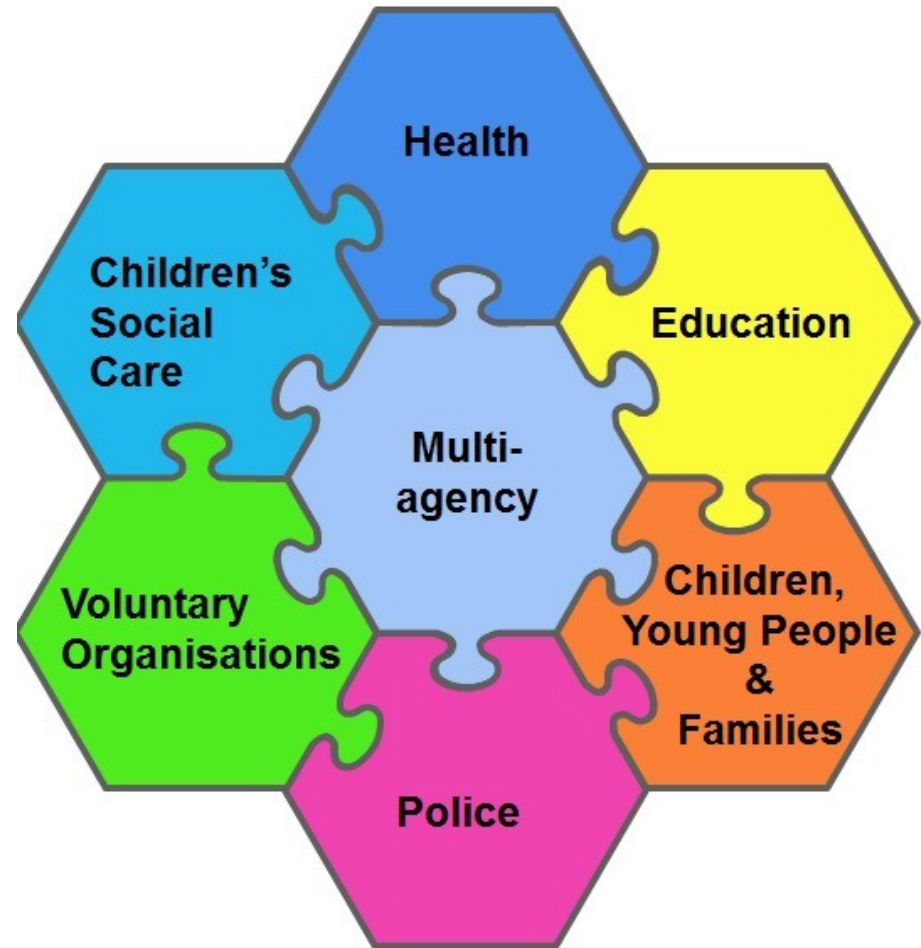
Lancashire Constabulary Divisions

Awaken
Engage
Deter



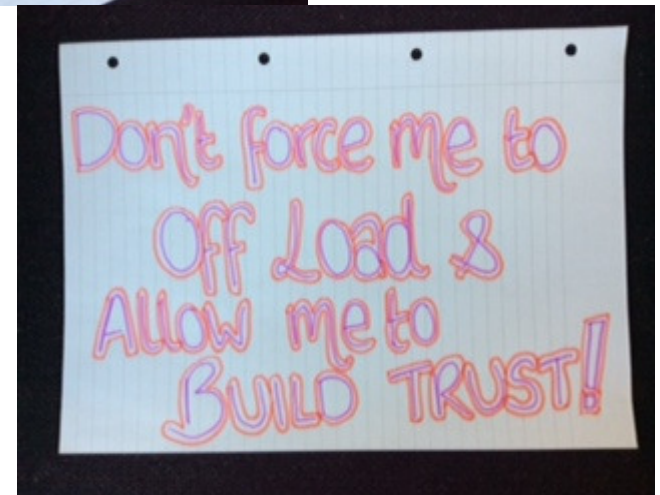
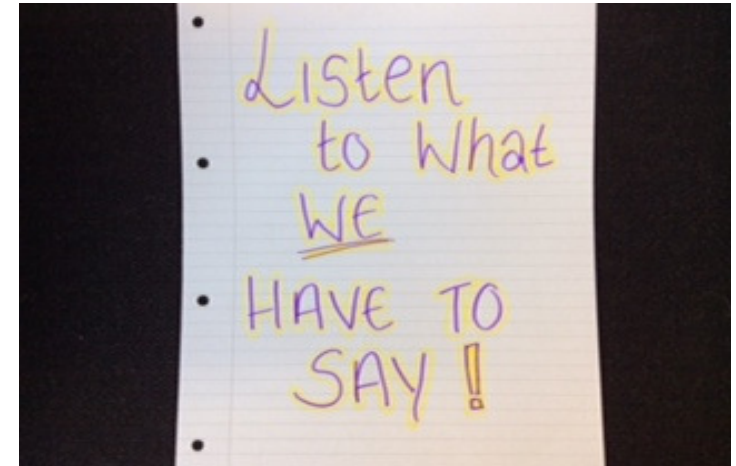
Multi-Agency Working

A good response to child sexual exploitation requires a multi-agency approach because each agency has specific responsibilities and expertise



Partnership Working

- *Co-location*
- *Person centred*
- *Advocacy*
- *Network building*
- *Relationship based practice*
- *Information Sharing*
- *Challenge other professionals*
- *Holistic assessments*



Awareness raising

- One off sessions with Parents/Carers
- Training in schools/youth centres
- Advice/support during sessions
- Child in Need/ Child protection meetings
- Liaising with family support workers
- Not just about prosecution



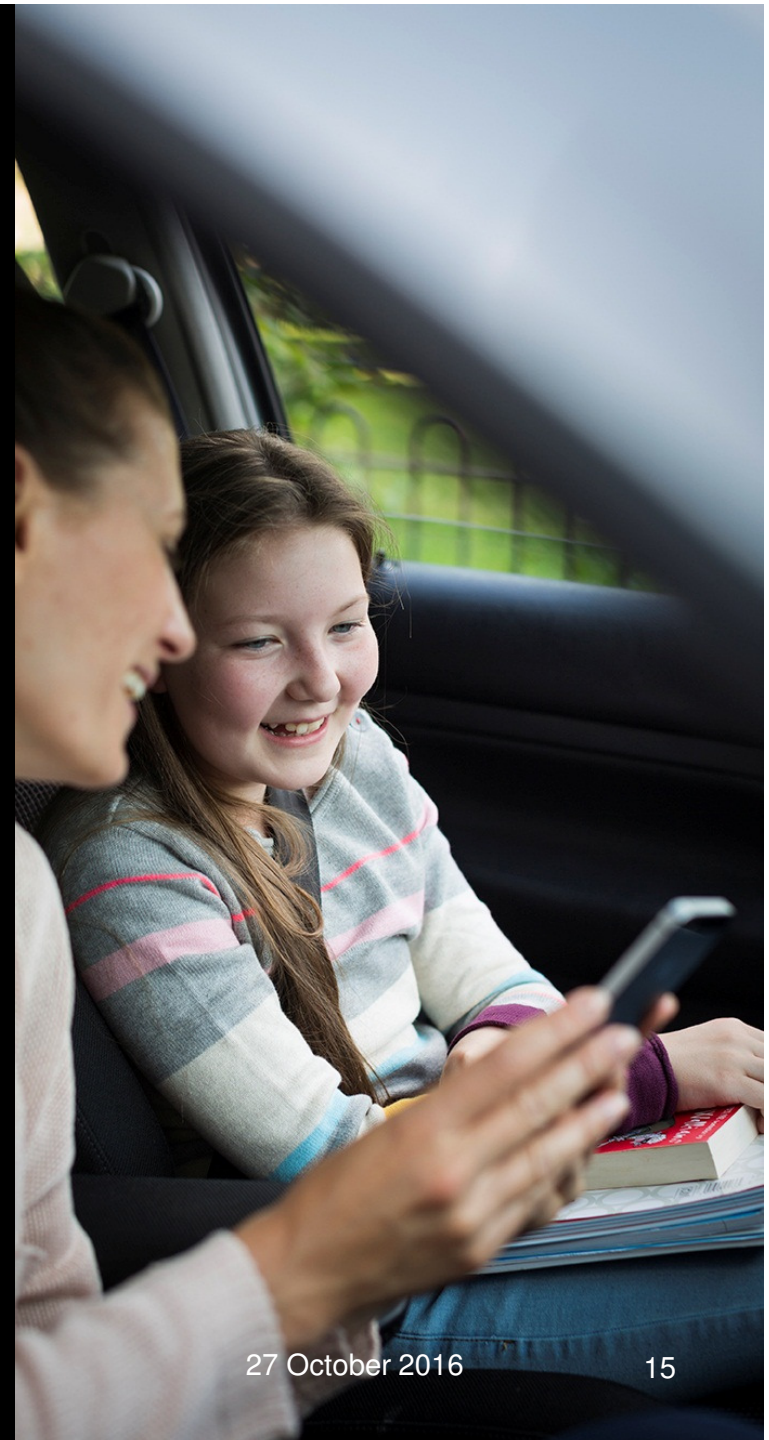
Professionals training

- Qualified Professionals-specialising in CSE
- Training for other projects
- LCSB training
- National working group
- Mental Health First Aid
- CEOP ambassador
- Legislation and changing trends



Information Sharing

- Founding members of Lancashire multi-agency teams (Cherish)
- Operational and strategic CSE committees of LSCB
- Monthly MACSE meetings
- Good communication/Networking
- Timely and appropriate



**The
Children's
Society**

**Thank you for
Listening**