



**Our Health Our Care**

# **Equality Forum Programme Update**

# Who are we?

We are working together...



Lancashire Care **NHS**  
NHS Foundation Trust

**NHS**  
Greater Preston  
Clinical Commissioning Group

Lancashire  
County  
Council 

**NHS**  
Chorley and South Ribble  
Clinical Commissioning Group

Lancashire Teaching Hospitals **NHS**  
NHS Foundation Trust

## Our purpose is to:

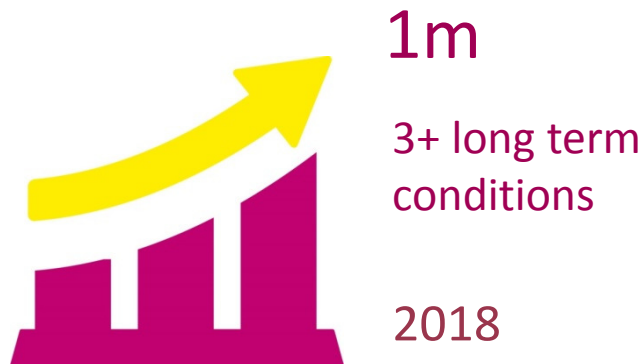
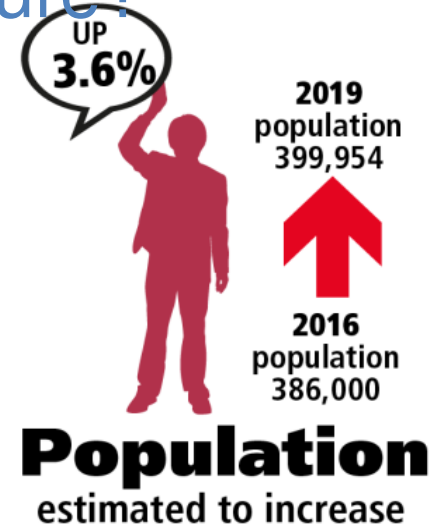
Design a new model of health and care to ensure that our services are **ready for the future**

# Why is Change needed?

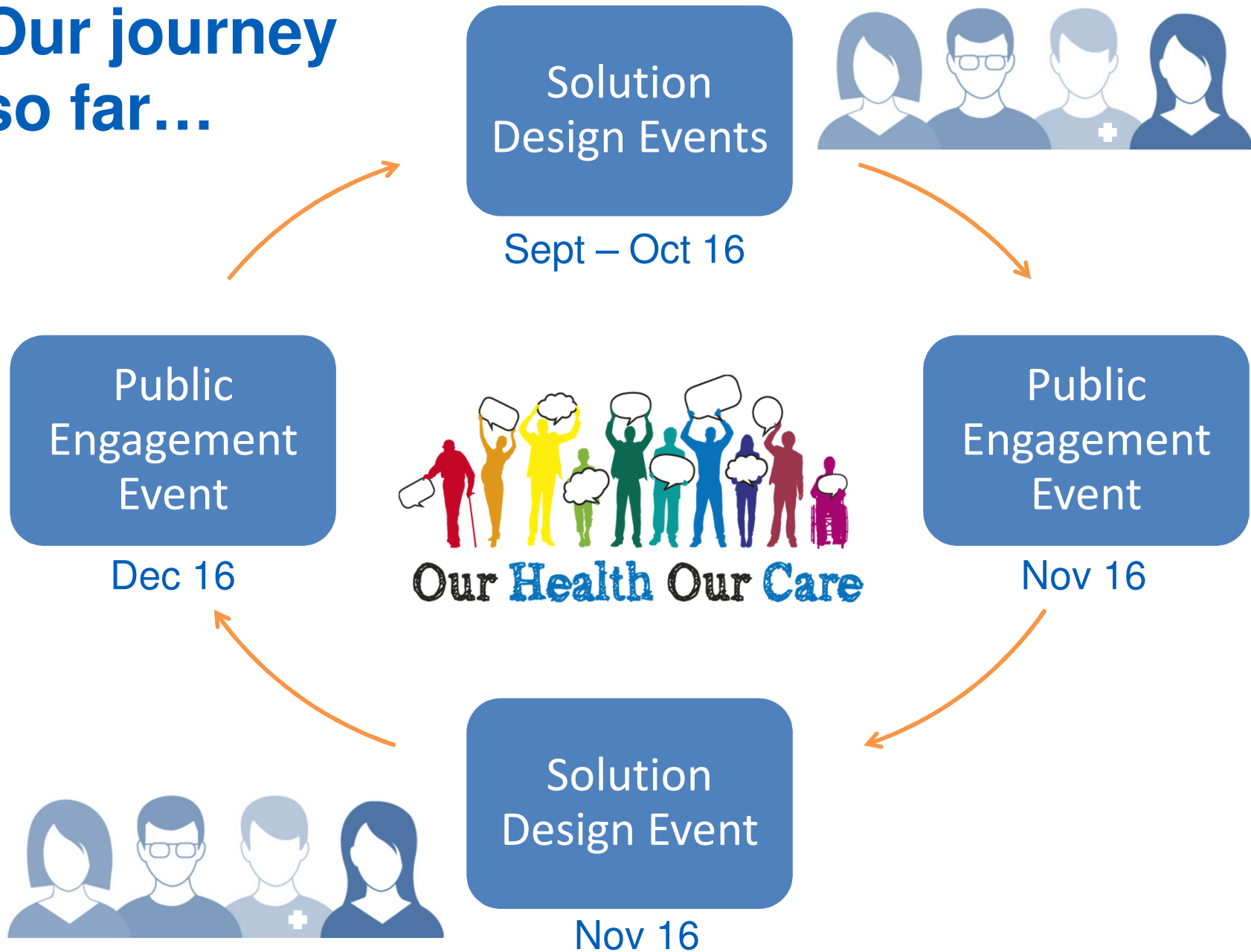
## Why are we not ready for the future?

There are changes to local populations:

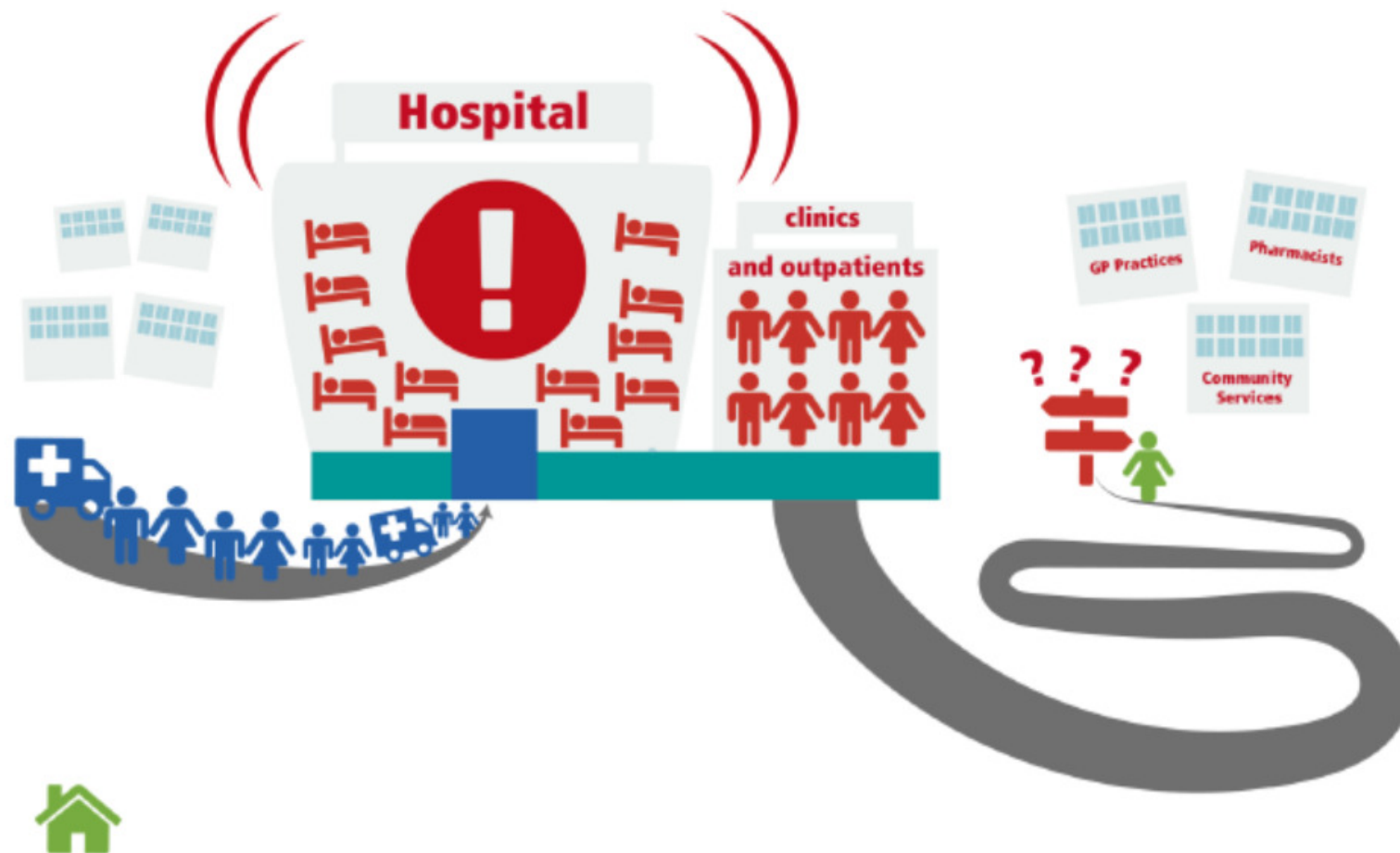
- The local population is growing and living longer
- Increasing long-term conditions
- Preventable illnesses are increasing



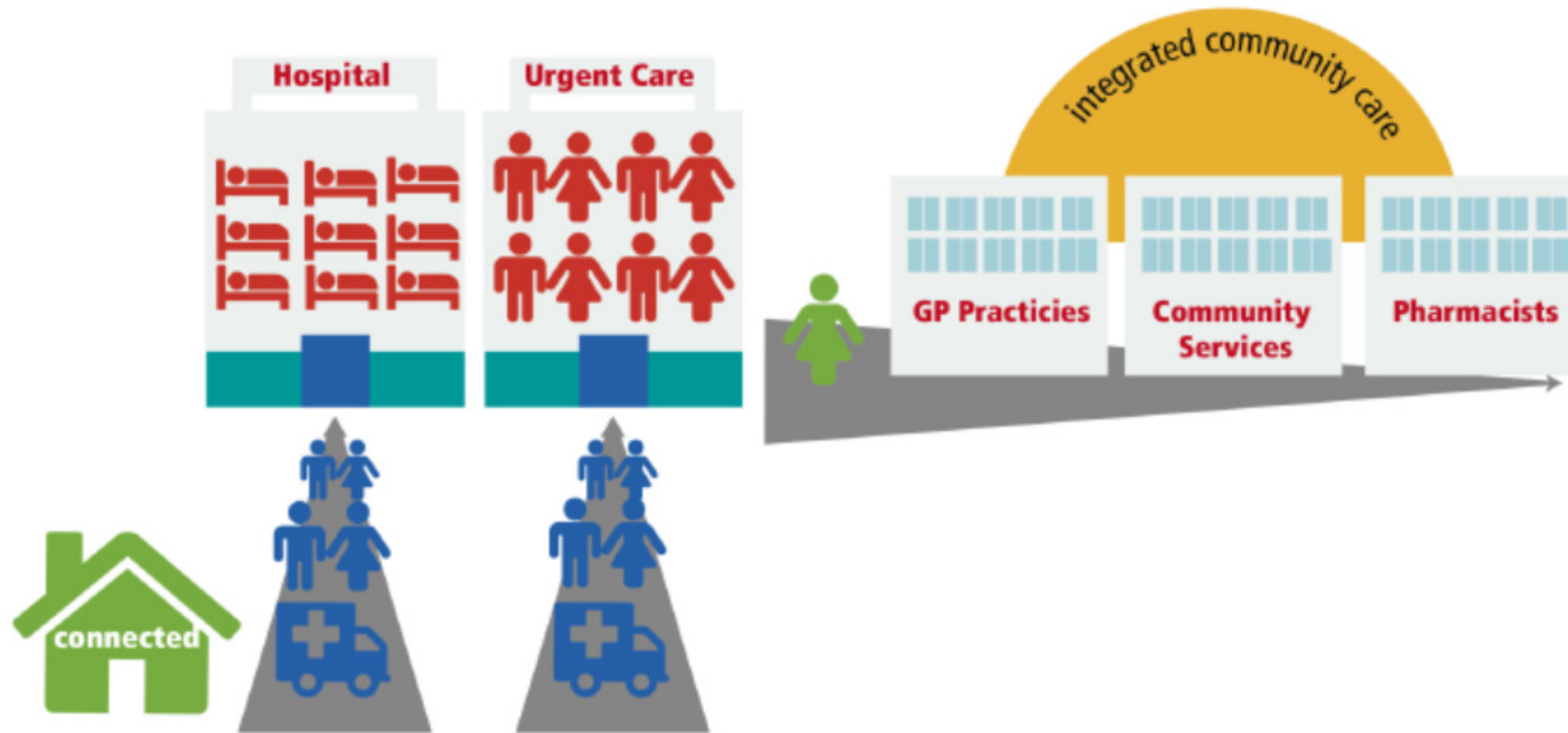
# Our journey so far...



# How our health and care services currently work



# How could this be changed?





**We asked:  
What do you think?**

People have told us that they think it is a good idea for health and care services to work together and that these other things are important:

- Information and better communication
- NHS should remain free at point of delivery
- IT and technology should be used more
- The changes need to enhance care and improve outcomes

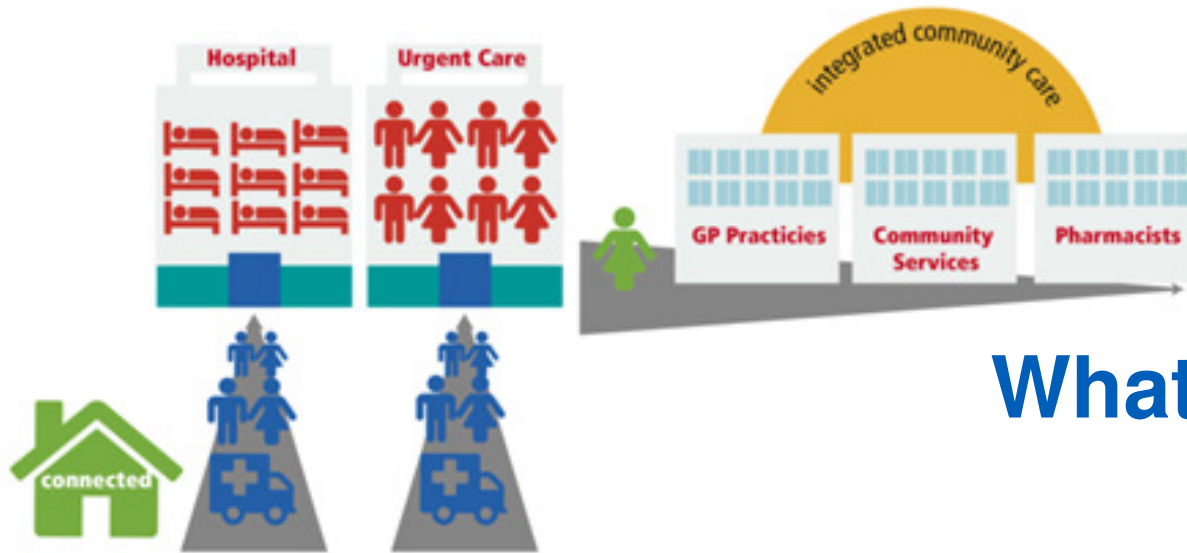
People talked about different places where care could be provided.

**We asked:  
What do you think?**

In total 318 comments were recorded, most comment placed services in the community:

- **‘Your regional specialist centre’** discussed 17 types of services, most commonly: **Heart treatment, radiotherapy and major surgery**
- **‘Your local hospital’** discussed 21 types of services, most commonly: **Mental health support, minor surgery, heart treatment and chemotherapy services**



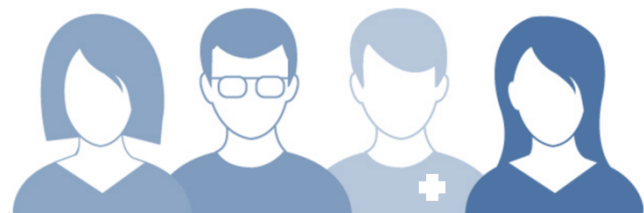


**We asked:  
What do you think?**

- ***‘Near your home – not in hospital’*** discussed 27 types of services, most commonly: **Physio and pre-op assessments**
- ***‘In your GP practice’*** discussed 26 types of services, most commonly: **Blood tests and physio services**
- ***‘In your home’*** discussed 21 types of services, most commonly: **Mental health support, diabetes monitoring and district nursing services**

# So what next?

The ideas are being developed ready to be shared in March 2017 at public engagement events near you.



21 Feb 2017

Solution  
Design Events



Public  
Engagement  
Event

March 2017



**Our Health Our Care**

# Want to get involved?

**Weds 8th March 2017**

2-4pm Gujarat Centre,

South Meadow Lane, Preston, PR1 8JN

6-8pm Health Academy 1,

Royal Preston Hospital, PR2 9HT

**Thur 9th March 2017**

2-4pm and 6-8pm

Chorley Town Hall, Market Street,

Chorley, PR7 1DP

**Mon 13th March 2017**

2-4pm and 6-8pm

South Ribble Borough Council Civic Centre

West Paddock, Leyland, Lancashire, PR25 1DH



**Our Health Our Care**

# What will happen during the March events?

Checking what we have heard

- ...is there anything missing?

More detail on the ideas for change

- Where have the ideas come from?
- What do you think about the ideas?

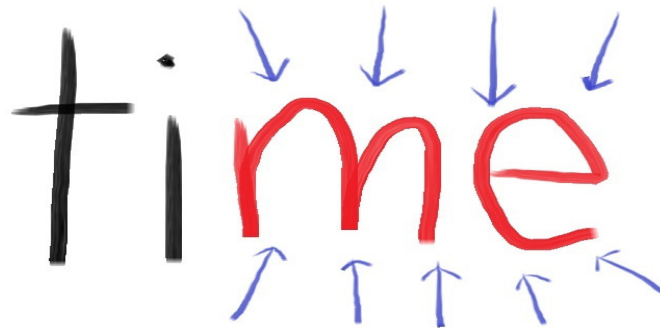


# What can you do to help?

- Get involved in discussions and help us reach as many people in the community as possible
- Come to the public engagement events
- Share the dates!
- Help us put posters up in different places
- Take part in our upcoming online activities



Thank you for listening and are there any questions?





# Contact us



Like us

[@OurHealthOurCareCL](#)



Tweet us

[@\\_OHOC](#)



**Our Health Our Care**

[www.ourhealthourcarecl.nhs.uk/](http://www.ourhealthourcarecl.nhs.uk/)

01772 214323

[ohoc.enquiries@nhs.net](mailto:ohoc.enquiries@nhs.net)

Chorley House, Centurion Way, Leyland  
Lancashire, PR26 6TT